



WELCOME TO THE
WORKSHOP IN ICELAND

**Socio-economic and Cultural Values of
Farm Animal Breeds**

7th – 9th September 2011 in Reykjavik, Iceland

**ORGANISED BY NORDGEN – THE NORDIC GENETIC RESOURCE CENTER
and
THE AGRICULTURAL UNIVERSITY OF ICELAND**



Iceland was, for the most part, settled by people from Norway and the British Isles in the 9th Century. The newcomers brought livestock with them from their homelands: sheep, cattle, goats, pigs, poultry, dogs, cats and especially horses, which were invaluable as a means of transport in this vast land. Icelandic farm animals are the direct descendants of the settlers' animals; the original stocks having been preserved. Through the centuries, Icelandic farm animals have had to cope with hard winters, famine and volcanic eruptions. They have had to adapt to difficult environmental conditions and are therefore unusually hardy, but by the same token, they are also susceptible to disease borne from abroad. Iceland is a food-producing country. For centuries, the country's basic industries have been agriculture, fishing and fish processing. Iceland is self-sufficient in the production of meat, dairy products, eggs and to a large extent also in the production of certain vegetables.

Farming is based largely on traditional livestock. For centuries, Icelandic farmers have raised both cattle and sheep, so-called mixed animal husbandry. Specialization has, however, increased significantly in recent years and farms have become fewer and larger at the same time. One characteristic of Icelandic agriculture is the diversity in coat colour of its native livestock. Horses, cattle and sheep exhibit many colour varieties, no particular variety having been favoured except for sheep where white wool is more valuable than coloured wool.

Organized breeding work is well established for all the native livestock species, cattle, sheep and horses and has resulted in more productive cows and sheep as well as horses that are known for good temperament and riding abilities.



WORKSHOP PROGRAM

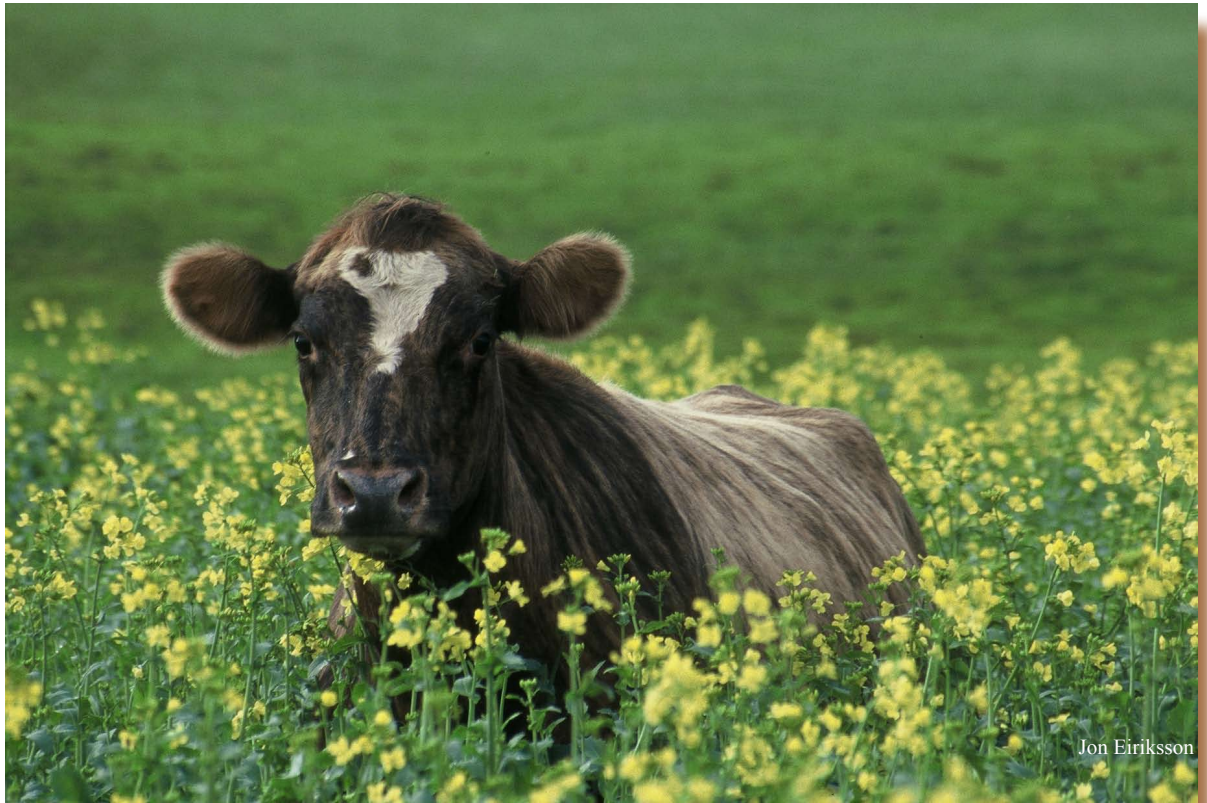
The program includes a two-day workshop (7th and 8th September) and a one-day field trip (9th September) to the Icelandic countryside. The Workshop program is implemented in four sessions: 1) Human-animal relationships, historical perspectives, 2) Conservation of endangered farm animal breeds in the frame of sustainable development, 3) Methodological approaches to value farm animals and local breeds, and 4) Conservation policies and practices.

The Workshop updates the current state-of-the art on the research field, finds the tools to incorporate the scientific results in socio-economic and political processes, identifies gaps in the scientific knowledge, promotes new scientific proposals and improves networking among social, cultural and agricultural scientists and other stakeholders.

Scientists, PhD students and young scientists, national gene resource coordinators, government officials and other stakeholders involved in conservation and sustainable utilization of farm animal genetic resources are welcome to attend the Workshop.

On the 9th of September, the Workshop participants are welcome to join the field trip and explore “göngur og réttir“. “Göngur og réttir“ - Roundup of the sheep - is old Icelandic tradition in sheep husbandry to sort sheep after collection from the grazing areas in late summer and autumn (mid-September). They continue to be used today as gathering places not only for animals (sheep or horses) but also for whole communities; consequently the monuments are the venue for a major social event in the seasonal calendar that combines many facets of rural living.





Keynote speakers and their topics:

Aina Bartman, Manager, The Farmer's Market, Norway
Story-telling on Farmer's Markets: How consumer alliances and direct sales can strengthen local breeds

Karl Benediktsson, Professor of Human Geography, University of Iceland, Iceland
The ambiguous boundaries between the wild and the domestic

Leo Granberg, Professor of Rural Studies, Ruralia Institute Mikkeli, University of Helsinki, Finland
Eco-social approach: Systems and diversity in society and ecology

Eija Pouta, Professor of environmental economics, MTT Agrifood Research Finland, Finland
Economic value of farm animal genetic resources

Katriina Soini, PhD, Principal Research Scientist in Cultural Geography, MTT Agrifood Research Finland, Finland
Socio-cultural approach: A typology on farmers raising local breeds





Jon Eiriksson

CALL FOR ABSTRACTS

All authors wishing to present papers at the Workshop are required to submit an abstract including the title, author's name and affiliation (including email address) and a brief abstract (max 5 sentences) to describe the aim of the paper. Abstracts are required to be in English. Based on these short abstracts, the organizing committee will choose additional 8 - 10 presentations which will be given as oral presentations at the Workshop. After acceptance, a more detailed abstract in English (max 1 A4 page) including the title, author's name and affiliation (including email address) and an abstract should be sent to the organizers.

The deadline for submission of the short abstracts is the 1st of July 2011. Authors will be informed by mid-July 2011 whether their abstracts have been accepted for presentation during the Workshop. A longer abstract should be sent no later than the 5th of August 2011.

The organizers will cover the travelling expenses and accommodation of speakers whose abstracts have been chosen for oral presentations. The organizers encourage particularly PhD students and young researchers to submit abstracts to the Workshop.

Abstracts should be sent to email address: **workshop.iceland@nordgen.org**

All abstracts and presentations of the Workshop will be made available for publication afterwards on the NordGen's website and on the GENOMIC-RESOURCES –Network's website.

REGISTRATIONS

In order to register at the workshop, please return the attached registration form to NordGen before the 29th of July 2011 to the email:

workshop.iceland@nordgen.org

or to the mailing address: NordGen, P.O. Box 115, NO-1431 Aas, Norway.

There is no registrations fee. All participants will be provided with breakfast, lunches, one dinner, coffee breaks and field trip. The number of participants is restricted with a maximum of 30 persons (including participants, lectures and organizers). If there are more than 30 registrations, the organizing committee unfortunately needs to prioritize to allow the best possible balance between stakeholder groups at the Workshop. Any "rejection" will be informed as soon as possible to those affected.

To those who will need a visa to enter Iceland, please contact Emma Eythorsdottir (emma@lbhi.is) to obtain an invitation letter.



TRAVEL INFORMATION

Scheduled flights to Iceland are operated by Icelandair (www.icelandair.com) and Iceland Express (www.icelandexpress.com). Other companies may offer flights during the summer – please, check for example www.dohop.com.

Buses to Reykjavík are scheduled in connection with incoming flights - www.re.is/Flybus/ - tickets are sold at the airport (not on the bus) and on the Internet. Passengers can be dropped off at major hotels in Reykjavík at a small extra charge (air bus + ticket). The bus will also pick you up at your hotel at departure if requested (inquire at the hotel).

WORKSHOP VENUE

Radisson Blu Saga Hotel, Hagatorg, 107 Reykjavik, Iceland <http://www.radissonblu.com/sagahotel-reykjavik>, Hotel telephone +354 5259900, Hotel fax +354 525 9909, Hotel email Reservations.saga.reykjavik@radissonsas.com

The welcoming and registration desk will be situated at the conference centre on the 2nd floor at the Radisson Blu Saga Hotel.

ACCOMMODATION

The accommodation is arranged at the **Hotel Fosshotel Baron**, Baronsstig 2, Reykjavik. Fosshotel Baron is located at corner of Skúlagata and Barónsstígur in the center of Reykjavík. The next bus stop is on Hverfisgata. http://www.fosshotel.is/en/hotel/reykjavik_hotels.php
Hotel telephone +354 562 3204, Hotel fax +354 552 4425

The organizers will book hotel rooms for the Workshop participants. A standard single room at the Hotel Fosshotel Baron costs circa 56 € per night. If a participant wishes to accommodate in some other hotel in Reykjavik, please contact directly to the hotel of your choice. Please indicate in the Registration Form if you will accommodate at the Hotel Fosshotel Baron.

FROM THE HOTEL TO THE WORKSHOP VENUE



*Walking from the Fosshotel to the Hotel Saga takes around 30 minutes.
Bus route no. 12 will take you from the Fosshotel to the Hotel Saga in 6 minutes.
See <http://www.straeto.is/english/routes/route12/>*



NordGen – Nordic Genetic Resource Centre
The Agricultural University of Iceland

Workshop

Socio-economic and Cultural Values of Farm Animal Breeds

7-9 September 2011
Reykjavik, Iceland

Agenda

Tuesday, 6 September

Arrival of participants

Wednesday, 7 September

Session I: Human-animal relationships

Chairman: Emma Eythorsdottir

- 09:00-09:20 Opening and welcome (Dr, Manager of NordGen Árni Bragason)
- 09:20-10:00 Introduction to the Workshop themes (Katriina Soini)
- 10:00-10:30 Ten thousand years of coevolution (Juha Kantanen)
- 10:30-10:45 **Coffee break**
- 10:45-11:30 Thousand years of domestic animal history in Iceland
- 11:30-12:30 **Lunch break**
- 12:30-13:15 **Key note I**
The ambiguous boundaries between the wild and the domestic
(Karl Benediktsson)
- 13:15-14:15 Presentations by Workshop participants in Session I
- 14:15-14:30 Coffee break

Session I

WORKSHOP INFORMATION



Session II: Conservation of endangered farm animal breeds in the frame of sustainable development

Chairman: Göte Frid

- 14:30-15:15 **Key note II**
Eco-social approach: systems and diversity in society and ecology (Leo Granberg)
- 15:15-17:00 Presentations by Workshop participants in Session II
- 17:00 Closing Day 1

Thursday, 8 September

Session III: Methodological approaches to value farm animals and local breeds

Chairman: Juha Kantanen

- 09:00-09:45 **Key note III**
Socio-cultural approach: A typology on farmers raising local breeds (Katriina Soini)
- 09:45-10:30 **Key note IV**
Economic value of farm animal genetic resources (Eija Pouta)
- 10:30-10:45 **Coffee break**
- 10:45-12:00 A case study: The Icelandic Cattle (Dadi Mar Kristofersson and Emma Eythorsdottir)
- Presentations by Workshop participants in Session III
- 12:00-13:00 **Lunch break**

Session IV: Conservation policies and practices

Chairman: Leo Granberg

- 13:00-13:45 **Key note V**
Story-telling on Farmer's Markets: How consumer alliances and direct sales can strengthen local breeds (Aina Bartman)
- 13:45-14:30 Presentations by Workshop participants in Session IV
- 14:30-14:45 **Coffee break**
- 14:45-16:00 Presentations by Workshop participants in Session IV
- 16:00-17:00 Final discussion and conclusions (Leo Granberg)
- 19:00 Dinner

Friday, 9 September

- 08:00 Excursion (Emma Eythorsdottir)

Saturday, 10 September

Departure

Session III

Session III

Session IV

WORKSHOP INFORMATION

Askeil Thorisson





Jon Eiriksson

REGISTRATION FORM

WORKSHOP “Socio-economic and Cultural Values of Farm Animal Breeds”

7th – 9th September 2011 in Reykjavik, Iceland

**ORGANISED BY NordGen – The Nordic Genetic Resource Center
and The Agricultural University of Iceland**

Please return this registration form **before 29th July 2011**
either to this email: workshop.iceland@nordgen.org
or to this mailing address: **NordGen, P. O. Box 115, NO-1431 Aas, Norway**

Name:

Position/title:

Address:

Telephone and email:

Submitting abstract with the title:

Date of arrival:

Date of departure:

I will accommodate at the Hotel Fosshotel Baron yes no

REGISTRATION FORM

